

Accepting an invite to a CANVAS course!

1. When a teacher adds a student to a Canvas course, the student will receive a 'Course Invitation' from Instructure Canvas.

Course Invitation



Instructure Canvas <notifications@instructure.com>
Wed 19/09/2018 11:57 AM

2. Pressing the 'Get Started' button included with the email invite will launch the DSODE Canvas login page (see step 3).

You've been invited to participate in the course, Entertainment. Course role: Student

Name: **Student Name**

Email: **Student.name@education.nsw.gov.au**

Get Started

[Click here to view the course page.](#) | [Update your notification settings](#)

3. Students will need to select 'Student login' to start the login process outlined below - Accessing CANVAS for the first time!



DSODE
DUBBO SCHOOL OF DISTANCE EDUCATION

[Student login](#)

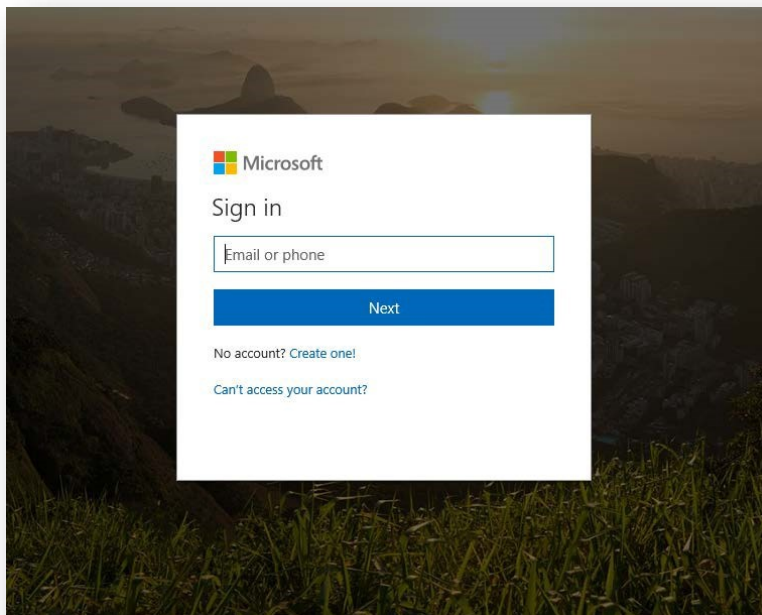
[Staff login](#)

[Guest login](#)

Accessing CANVAS for the first time!

1. Access CANVAS at: <http://dsode.instructure.com/>
2. Log in with your DoE (Department of Education) email address (the email that ends in @education.nsw.gov.au). For example: joe.bloggs3@ education.nsw.gov.au

(i) Type your email into the screen that appears:



(ii) You will be taken to the Department of Education Portal. To authenticate your logon – sign in here with your username and password.

User ID: Your username is the first part of your email address including any numbers (the email that ends in education.nsw.gov.au)

For example: joe.bloggs3@education.nsw.gov would have a username of joe.bloggs3

Password: Your password is the password you use to access the student portal. If you have forgotten this, please contact your

Log in with your DoE account

User ID

Student Name

Example: jane.citizen1

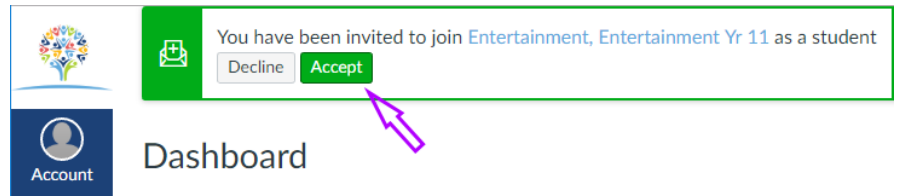
Password

.....

Log in

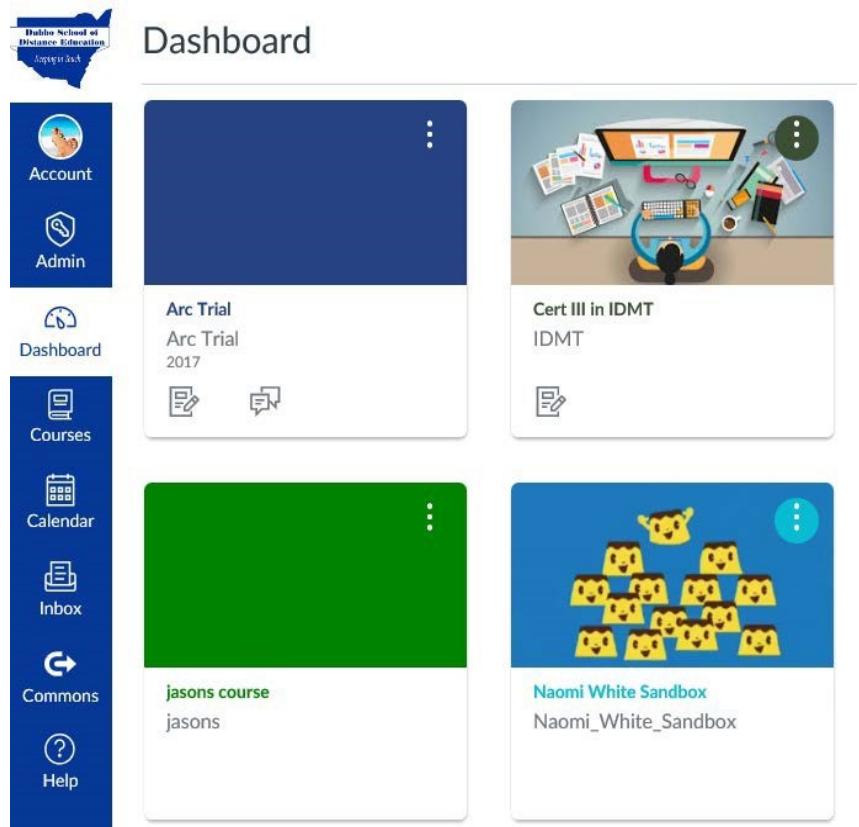
[Forgot your password?](#)

- If accessing a course for the first time you will need to press the green 'Accept' button to access the course.

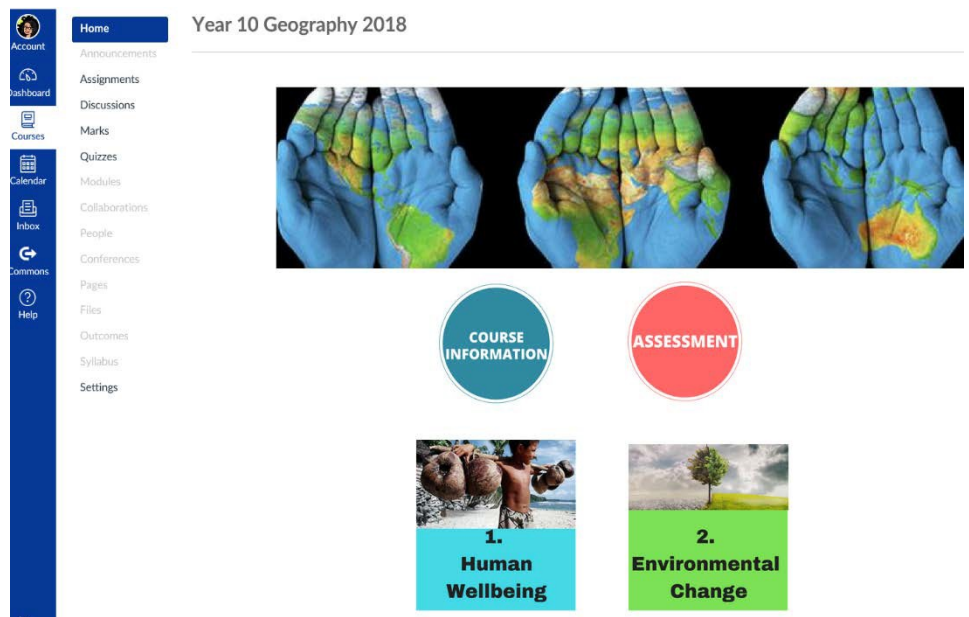


Or

- Select your course from the Dashboard. You will only see the courses you are enrolled in. Click on the course tile to access the course material.



- Courses will open to a landing page similar to the one shown here. Below the banner you will find links to your course work and information.



Welcome to the DSODE Canvas Learning Environment.

Please contact your class teacher for further support with your coursework.